



Interchangeable Inserts to Increase IGRT and Gated QA Test Capabilities

Optional Inserts

With additional inserts from Modus QA the QUASAR™ Respiratory Motion Phantom is capable of performing a wide range of applications including; planning system QA, dose distribution measurement for both neutral density and lung density material, 4D CT imaging, and 4D PET CT imaging.

KEY FEATURES

- ▶ Wide range of flexible and cost-effective inserts
- ▶ Quickly remove and easily replace interchangeable inserts
- ▶ Compatible with both the QUASAR Respiratory Motion Phantom and Motion Assembly (P/N: 100-1011 & 100-1012)

LUNG DENSITY MATERIAL INSERTS



- A** Cedar Lung Tumour Insert (for Gafchromic film) Centered 500-3313 2D Dose Distribution in and around a Tumour within Lung Density Material
- B** Offset Cedar Lung Tumour Insert (for Gafchromic film) Offset 500-3333 for use with Rotation Stage

Imaging of a Tumour within Lung Density Material

Cedar Insert with Solid Tumour-without drilling
(for imaging only)

P/N: 500-3311 (Centered)
P/N: 500-3331 (Offset)



Cedar Insert (drilled)
P/N: 500-3395 (Centered)
P/N: 500-3335 (Offset)



Chamber Dosimetry within Lung Density Material

Split Cedar Insert (CyberKnife)
P/N: 500-3316 (Centered)
P/N: 500-3336 (Offset)



Opening for 32 mm Ball Cube.

Chamber Dosimetry in a Tumour within Lung Density Material

Cedar Insert with Solid Tumour-drilled

P/N: 500-3312 (Centered)
P/N: 500-3332 (Offset)



Accuracy. Confidence.™

Acrylic Insert
P/N: 500-3305



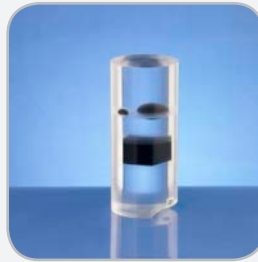
*Ion Chamber
Measurements in Neutral
Density Material*

**Film Cassette
(any film)**
P/N: 500-3315



*2D Dose Distribution
Measurement in Neutral
Density Film size: 6x15cm*

**4D CT
Imaging Insert**
P/N: 500-3317



*Acquisition, Reconstruction
and Display*

**4D PET CT
Imaging Insert**
P/N: 500-3318



*Acquisition, Reconstruction,
Display and Registration
30 mm Sphere*

**Hollow Insert with
Screw Cap**
P/N: 500-3314



*Fill with liquid or gel for
user-specific tasks*

SPECIFICATIONS

- ▶ Each Insert is 8 cm diameter x 18 cm long
- ▶ Acrylic inserts approximately 900 grams
- ▶ Cedar inserts are made of select cedar, free of knots, but with variable properties inherent in the nature of solid wood
- ▶ 4D CT Imaging Insert contains Delrin® objects, Film Cassette contains steel pins and all have a small magnetic clasp
- ▶ Customized inserts are available upon request

ORDERING INFORMATION

- 500-3305: Acrylic Insert
- 500-3311: Cedar Insert with solid tumor
- 500-3312: Cedar Insert with solid tumor (drilled)
- 500-3313: Cedar Lung Tumor Insert (split)
- 500-3314: Hollow Insert with screw cap
- 500-3315: Film Cassette
- 500-3317: 4D CT Imaging Insert
- 500-3318: PET CT Insert
- 500-3322: MP Insert Adapter
- 500-3395: Cedar Insert (drilled)

OPTIONAL ACCESSORIES

- 500-3330: Rotation Stage for 3D motion

ADDITIONAL INSERTS (Requires Rotation Stage)

- 500-3331: Offset Cedar Insert with solid tumor
- 500-3332: Offset Cedar Insert with solid tumor (drilled)
- 500-3333: Offset Cedar Lung Tumor Insert (split)
- 500-3335: Offset Cedar Insert (drilled)



MP Insert Adapter
P/N: 500-3322

*Modifies the inserts to
enable stationary testing
in the QUASAR™ Multi-
Purpose Body Phantom*



Above: *The QUASAR Respiratory Motion Phantom with Rotation Stage enables cylindrical inserts to rotate as they translate with a 60° total range of motion (± 30° from the horizontal).*

© 2016 Modus Medical Devices Inc. All Rights Reserved. Specifications subject to change without notice. Modus QA is not responsible for errors or omissions. Modus QA makes no warranties or commitments concerning the availability of future products or versions that may be planned or under development. PDS#500-33XX, REV#09/13

Modus QA

1570 North Routledge Park,
London, Ontario Canada N6H 5L6

Toll Free: +1 (866) 862-9682 (North America)
Phone: +1 (519) 438-2409
Fax: +1 (519) 643-0127

[e] info@modusQA.com
[w] www.modusQA.com

GET SOCIAL



modusQA.com