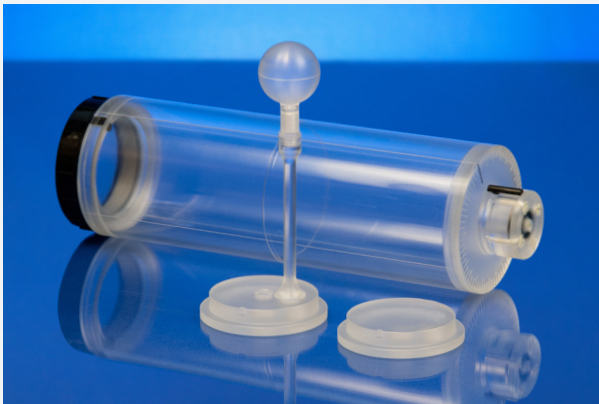
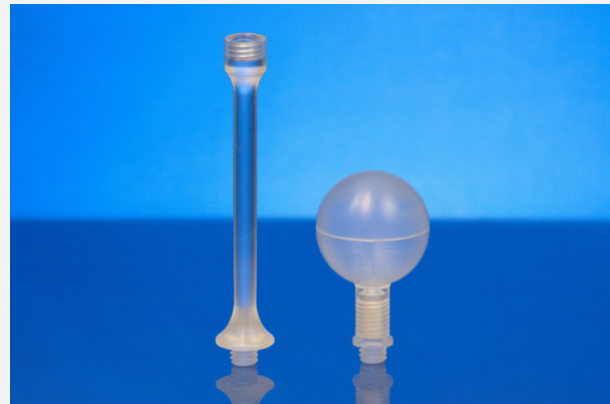


## Interchangeable Insert with Fillable Spherical Target



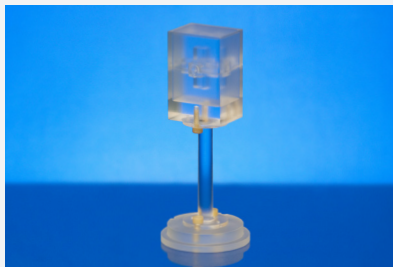
Hollow Acrylic Insert: Item #500-3605



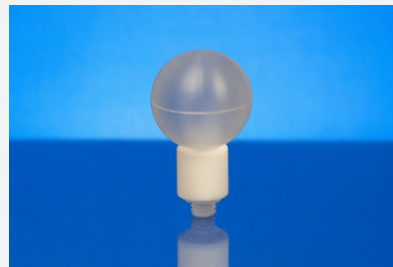
Additional Fillable Spherical Target: Item #500-3606

Every MRI<sup>4D</sup> Motion Phantom includes two Hollow Acrylic Inserts, each featuring a 30mm ID fillable spherical target with stem and two seal-lids (one plain, and one with central and offset mounting holes). Additional Hollow Acrylic Inserts (#500-3605) and Fillable Spherical Targets (#500-3606) are available for purchase separately.

Available options for the Hollow Acrylic Insert include a Fillable Cuboid Imaging Target (#500-3616), and an MV Imaging Ceramic Sleeve (#500-3617) that attaches to the fillable spherical target.

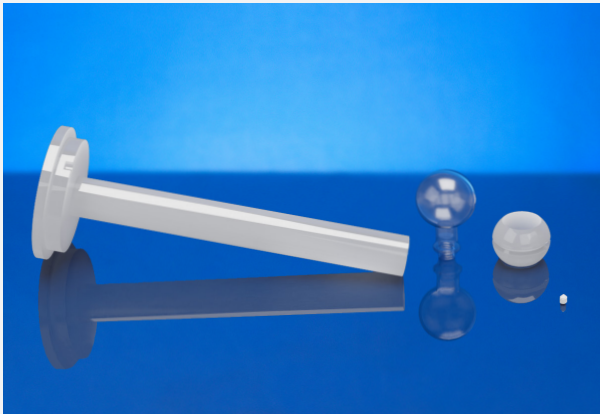


Fillable Cuboid Imaging Target  
Item #500-3616

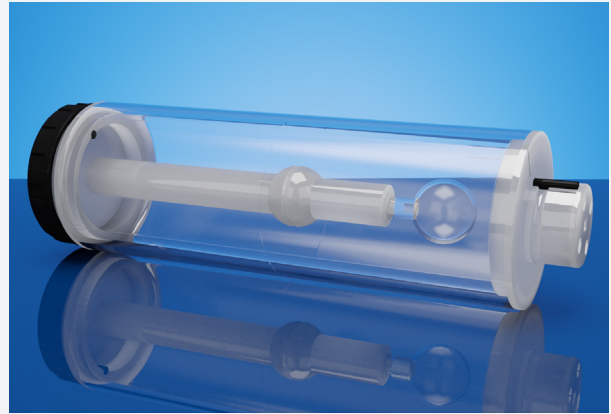


MV Ceramic Sleeve (Installed on  
Target for Reference) Item #500-3617

## Ion Chamber Holders



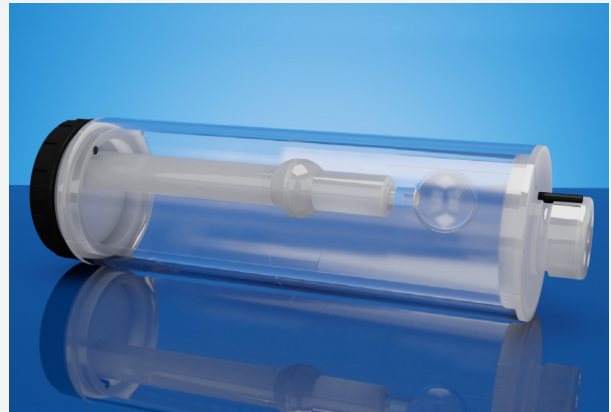
Center Ion Chamber Holder: Item #500-3610



Center ICH Installed in Hollow Insert for Reference



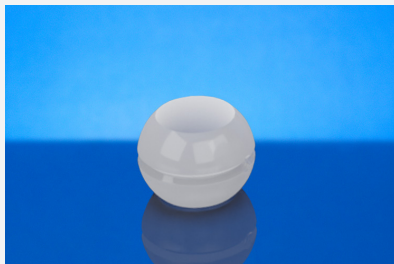
Offset Ion Chamber Holder: Item #500-3609



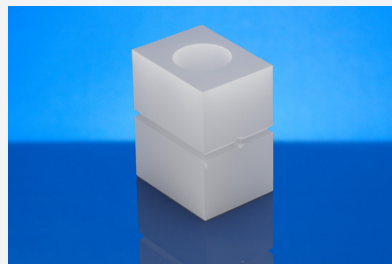
Offset ICH Installed in Hollow Insert for Reference

Expand the capabilities of the Hollow Acrylic Insert with an MRI<sup>4D</sup> Ion Chamber Holder; available in central and 15mm offset configurations for complex 3D motion testing. Both Ion Chamber Holders include a 30mm OD solid contouring sphere with 5mm isocenter locating groove, and a 30mm ID fillable spherical tracking target.

Options include a Solid Contouring Cuboid (#500-3608) and an MV Imaging Ceramic Sleeve (#500-3617). (Ion chamber type to be specified at time of ordering — major suppliers available upon request.)

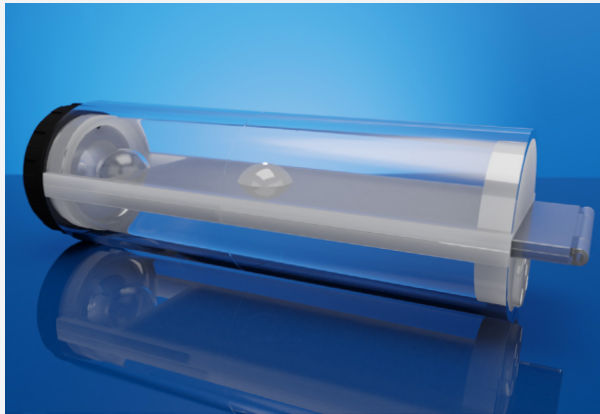


Included Solid Sphere Target

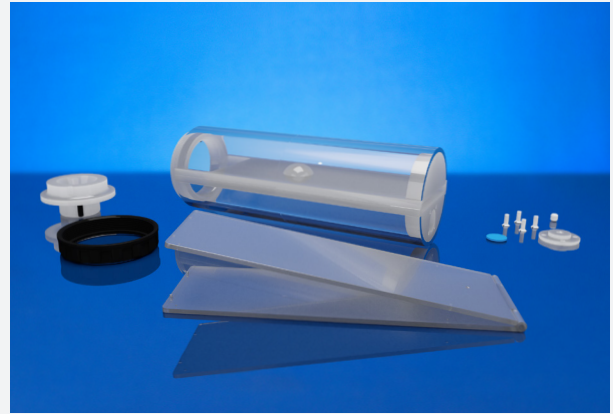


Optional Solid Cuboid Target  
Item #500-3608

## Film Cassette Insert

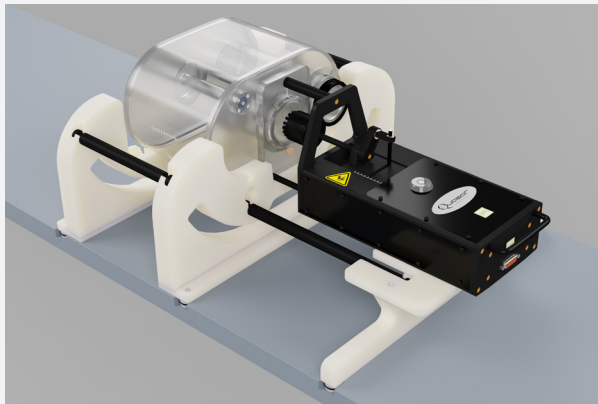


Film Cassette Insert: Item #500-3607  
(Shown with Optional Fillable Spherical Target for Reference)



Included Parts

The MRI<sup>4D</sup> Film Cassette Insert accommodates one layer of EBT3 film with dimensions of 70mm x 175mm. The convenient, hinged cassette features indentation structures to provide film reference marks and is designed to slide into the insert body without affecting signal-generating fluid levels. The insert body features a 30mm OD solid spherical target with incorporated contouring features to enable MR/MV tracking. A threaded hole, located in the insert cap, allows the attachment of a 30mm fillable spherical target for additional tracking capabilities.



MRIdian Table Indexing Cradle: Item #500-3632  
(MRI<sup>4D</sup> Phantom Shown for Reference)

Align the MRI<sup>4D</sup> phantom to the MRIdian system quickly and repeatably with the ViewRay MRIdian Table Indexing Cradle. The cradle accommodates phased array coils, while also allowing the motor to be positioned in central or offset configurations.

This cradle is also available through the MRI<sup>4D</sup> ViewRay Accessory Package (#500-3619).

© 2019 Modus Medical Devices Inc. All Rights Reserved. Specifications subject to change without notice. Modus QA is not responsible for errors or omissions. Modus QA makes no warranties or commitments concerning the availability of future products or versions that may be planned or under development.

### Modus QA

1570 North Routledge Park,  
London, Ontario Canada N6H 5L6

[e] [info@modusQA.com](mailto:info@modusQA.com)  
[w] [www.modusQA.com](http://www.modusQA.com)

Toll Free: +1 (866) 862-9682 (North America)  
Phone: +1 (519) 438-2409  
Fax: +1 (519) 643-0127

### GET SOCIAL



[modusQA.com](http://modusQA.com)