

# QUASAR™ INSIGHT ACCESSORY GUIDE

## MRgRT Insight Phantom **QUASAR** BY MODUSQA

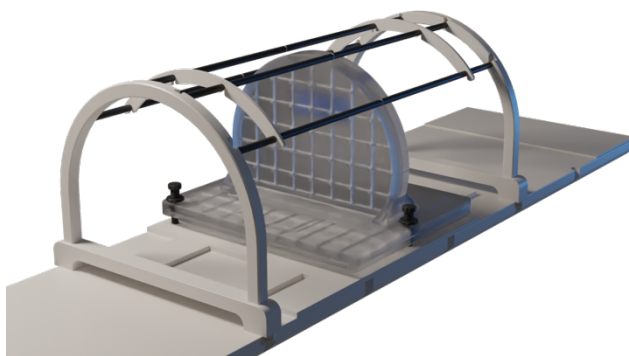
### INDEXING ACCESSORY (500-3730)

An optional Indexing Fixture is available to aid in the alignment efficiency for MR-SIM and Elekta Unity couches. (Not compatible with ViewRay MRIdian Posterior Phased-Array coils). The Indexing Fixture locks onto a standard indexing bar and houses indexing locations for 2 of the levelling feet located on the Insight phantom base.



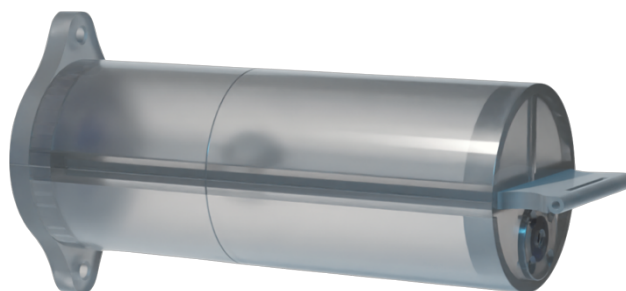
### PHASED ARRAY COIL BRIDGE (500-3750)

The ViewRay MRIdian phased-array coil bridge is designed to allow the use of the phased-array coils, without placing excessive stress on the coils or connectors and placing the anterior coil in an ideal position to image the phantom. The base of each end support is elevated to allow coil cable management.



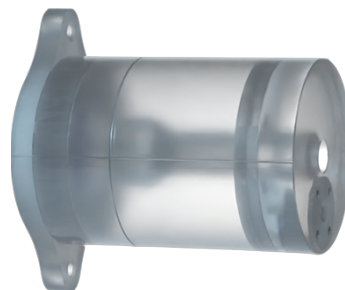
### FILM CASSETTE INSERT (500-3705)

A film cassette with a 70mm x 175mm single sheet EBT3 film capacity is available for a variety of targeting and dosimetry tests. The insert is filled with mineral oil for MR contrast and an enclosed compartment keeps the film cassette dry. A 3mm acrylic sphere, which is bisected by the film plane, creates a negative MR signal target. There are 3 film-piercing pins located on the inner, upper cover of the cassette to register the location of the film.



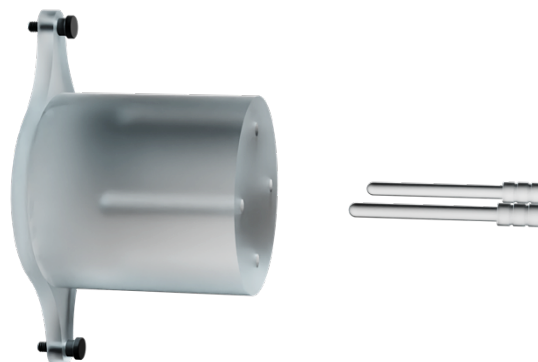
### **SINGLE ION CHAMBER HOLDER (500-3720)**

Daily dosimetry output and end-to-end QA can be performed with an ion chamber insert located at isocenter and offset positions. The single ion chamber holder is filled with mineral oil and features an acrylic sphere surrounding the dose collection point, providing a negative MR signal target. Insert will be custom-drilled to accommodate your farmer-style ion chamber model.



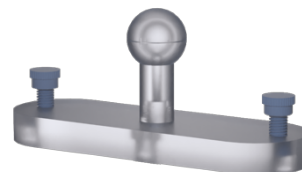
### **DUAL ION CHAMBER HOLDER (500-3740)**

The Dual Ion Chamber Holder has utility in performing beam uniformity measurements in a vertical or horizontal orientation. The ion chamber profiles are custom drilled based on your particular IC model into an acrylic housing. Corresponding acrylic blanks are provided to fill chamber locations when not in use. NB. There are no MR contrast components visible in this accessory. MR imageable structures in the upright component of the phantom are used for positional targeting.



### **LASER ALIGNMENT TARGET (500-3710)**

The 10mm laser alignment target can be used to check laser alignment system calibration relative to the DICOM isocenter when placed centrally on the phantom. Offset registrations can also be performed with 50 mm increments A/P and R/L directions. S/I displacement can be achieved by placing the target(s) on opposite faces of the upright. Target is filled with mineral oil, which provides signal for MR detection.



### **MR/MV TARGETS (3) (500-3712)**

Three separate MR/MV targets consisting of a 10mm Zirconium Oxide Ball Bearing, surrounded by mineral oil MR contrast media may be used for 3D MR/MV registration, with several positioning options possible. MR/MV targets can also be used for MLC positioning accuracy using EPID verification.

